
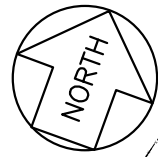


Legend

-  Scope of Work
-  Areas to be Repaved
Bid Item #1
-  Areas to be Repaved
Bid Item #2
-  Offset from Bldg

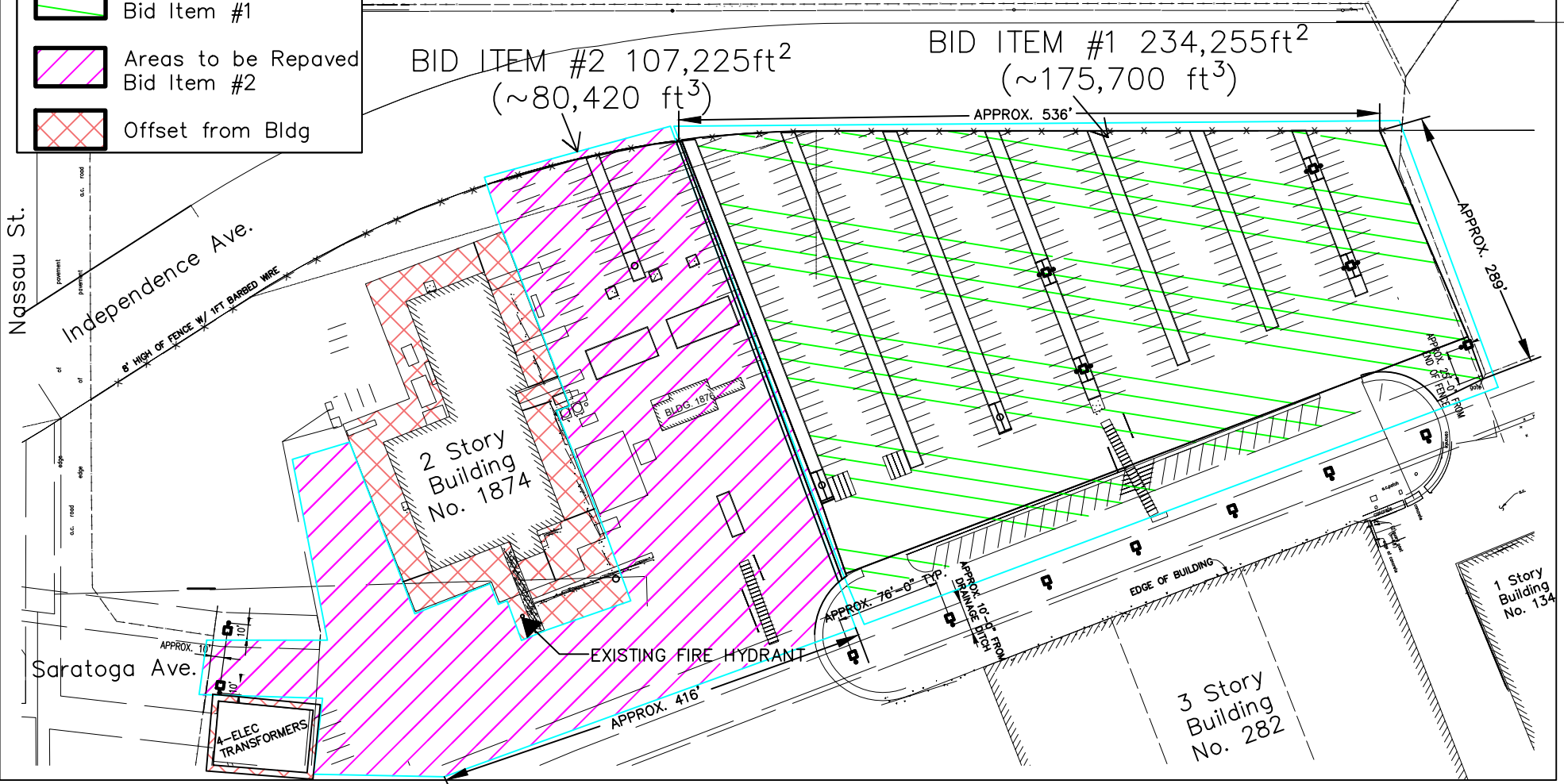
Notes

1: Drawings not to scale. Approximate locations shown.



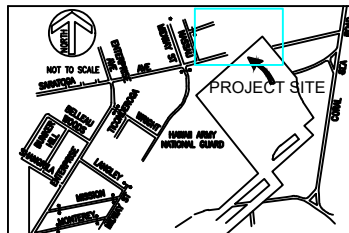
BID ITEM #2 107,225ft²
(~80,420 ft³)

BID ITEM #1 234,255ft²
(~175,700 ft³)

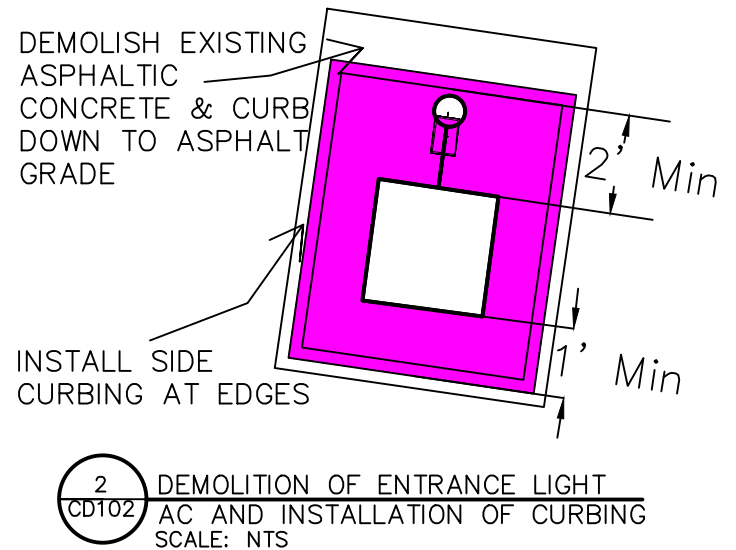
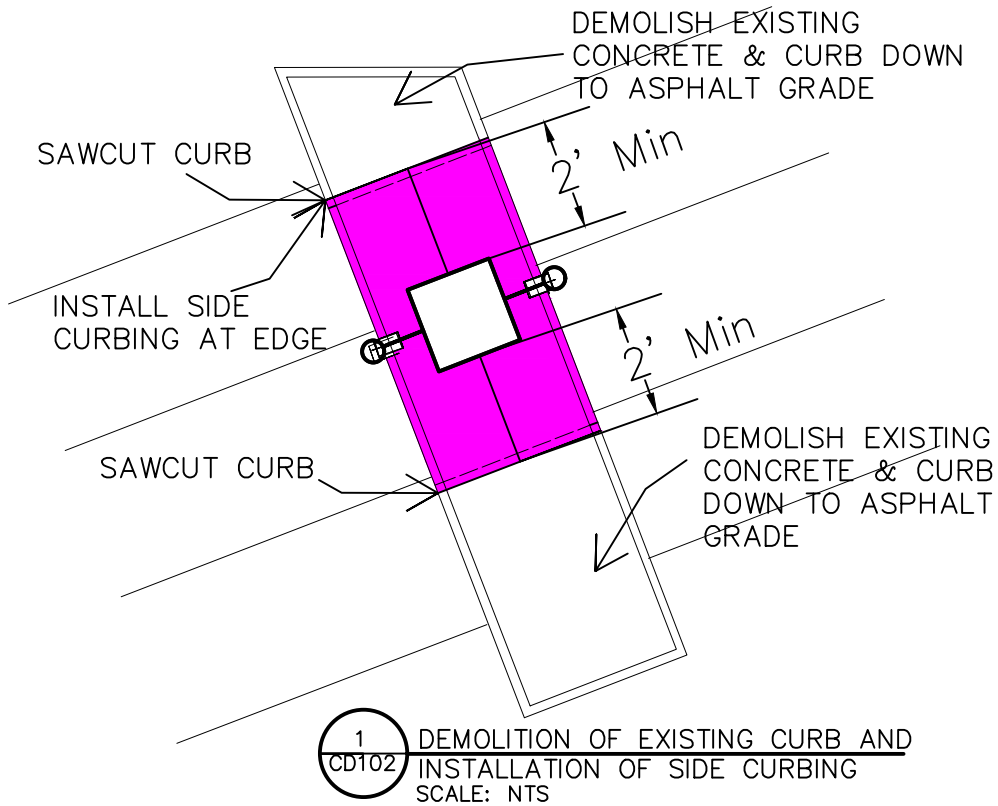


Site Name:	B282 Parking Lot
TMK:	9-1-013-045-0000
REVISIONS	

DRAWN ON	25-Jul-25
DRAWN BY	Rick
CHECKED BY	Cory & Jim

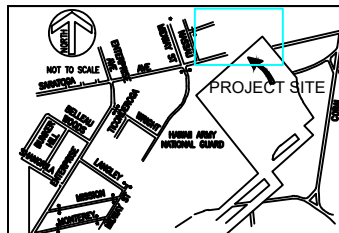


LOCATION:	Kalaeloa
PROJECT TITLE:	B282 Repaving Lot & Entrance Existing Site Plan
Scale:	Approximation
SHEET NO.	C100

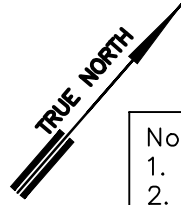
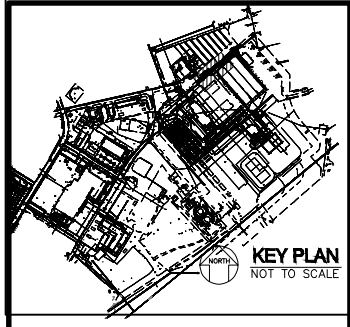
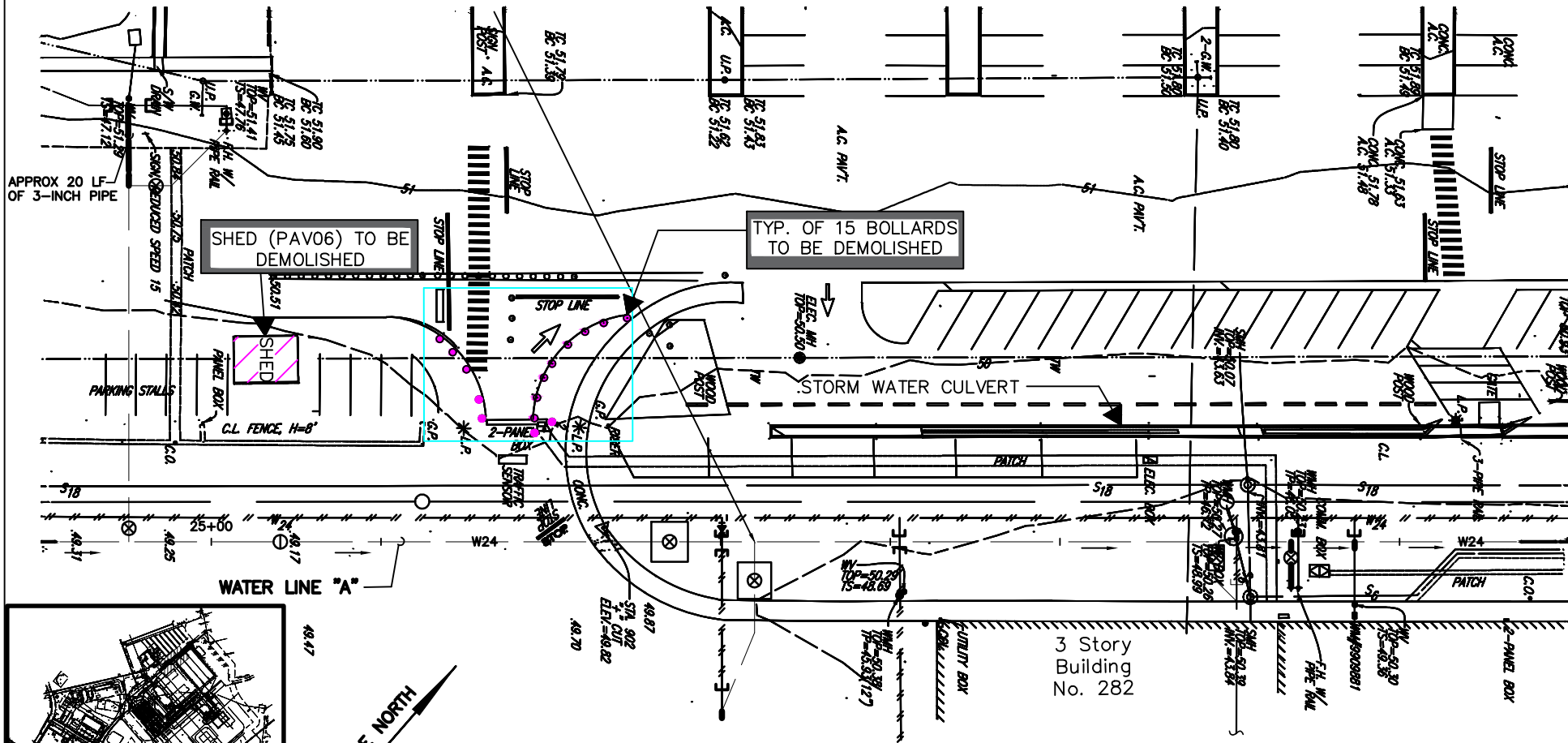


Site Name:
B282 Parking Lot
TMK: 9-1-013-045-0000
REVISIONS

DRAWN ON 23-Jul-25
DRAWN BY Rick
CHECKED BY
Cory & Jim



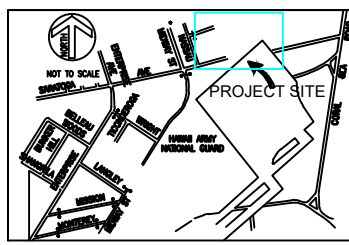
LOCATION: Kalaeloa
PROJECT TITLE:
B282 Repaving Lot & Entrance
Demolition Detail
SHEET NO. CD102
Scale: Not to Scale



Notes
 1. Drawings not to scale. Approximate locations shown.
 2. Contractor is to slope all drainage to storm water culvert.

Site Name:
 B282 Parking Lot
 TMK: 9-1-013-045-0000
 REVISIONS

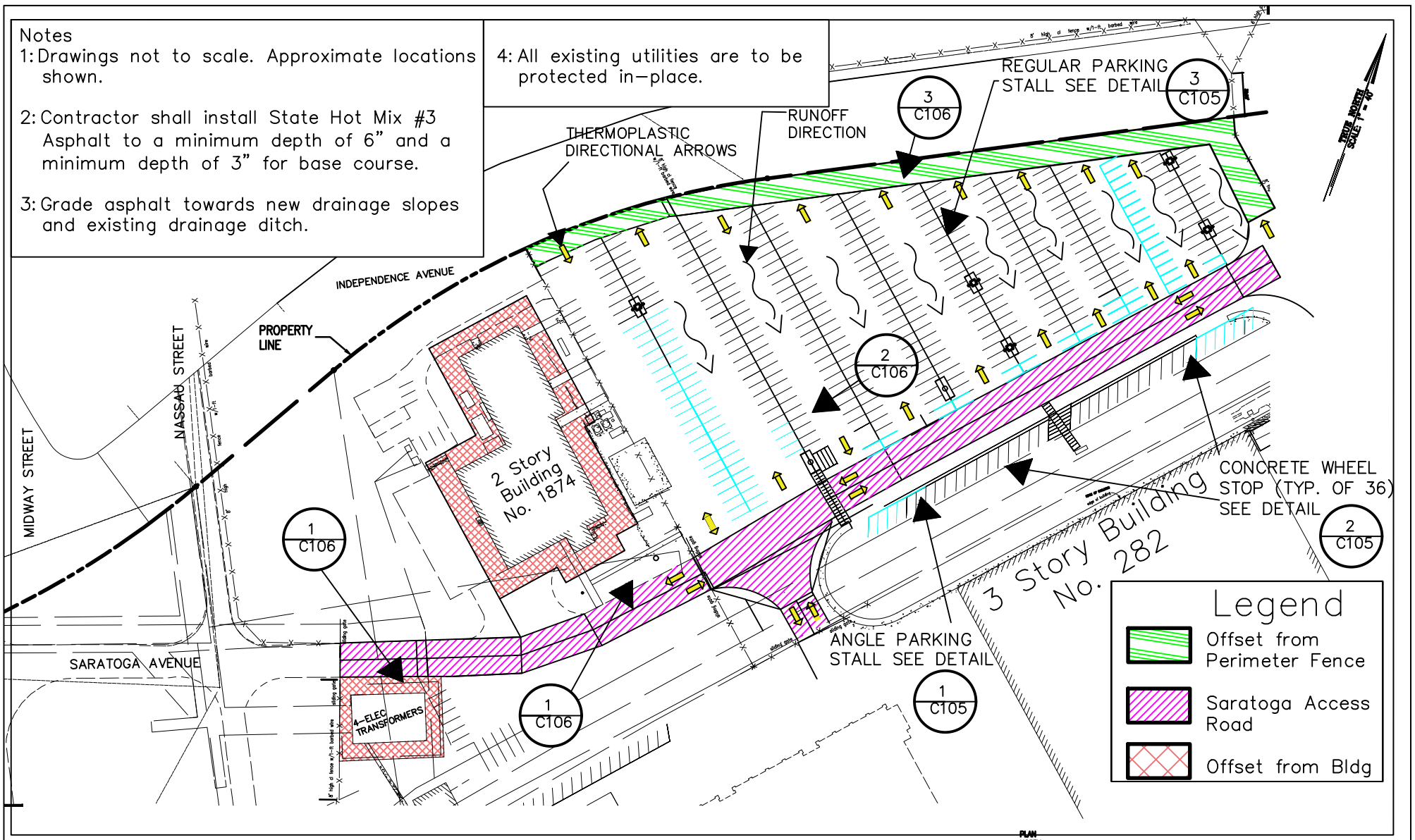
DRAWN ON 23-Jul-25
 DRAWN BY Rick
 CHECKED BY
 Cory & Jim



LOCATION: Kalaeloa
 PROJECT TITLE:
 B282 Repaving Lot & Entrance
 Bollard Removal
 SHEET NO. CD103
 Scale:
 Approximation

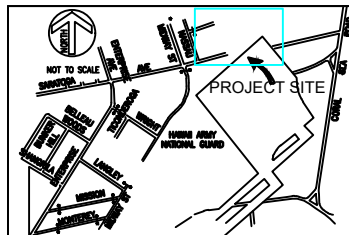
- Notes
- 1: Drawings not to scale. Approximate locations shown.
 - 2: Contractor shall install State Hot Mix #3 Asphalt to a minimum depth of 6" and a minimum depth of 3" for base course.
 - 3: Grade asphalt towards new drainage slopes and existing drainage ditch.

4: All existing utilities are to be protected in-place.



Site Name:
B282 Parking Lot
TMK: 9-1-013-045-0000
REVISIONS

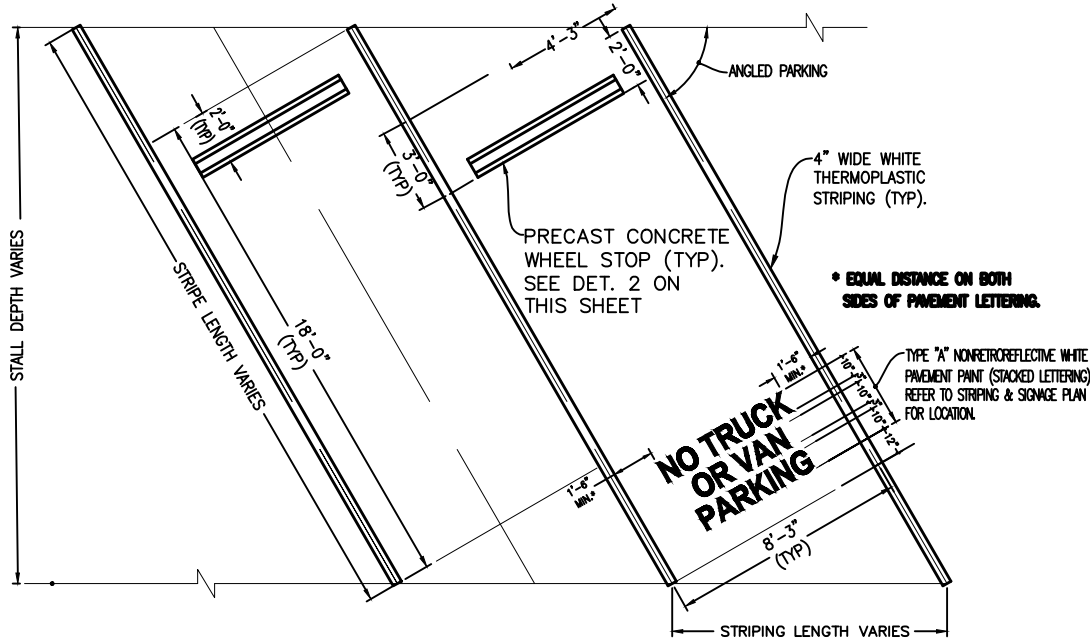
DRAWN ON 25-Jul-25
DRAWN BY Rick
CHECKED BY
Cory & Jim



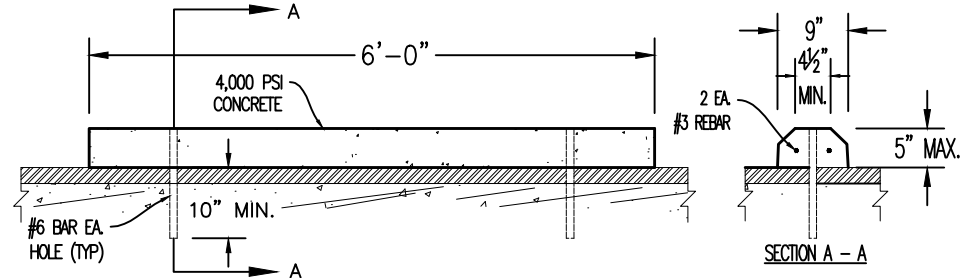
LOCATION: Kalaeloa
PROJECT TITLE:
B282 Repaving Lot & Entrance
Installation Plan
SHEET NO. C104
Scale: Approximation

NOTES

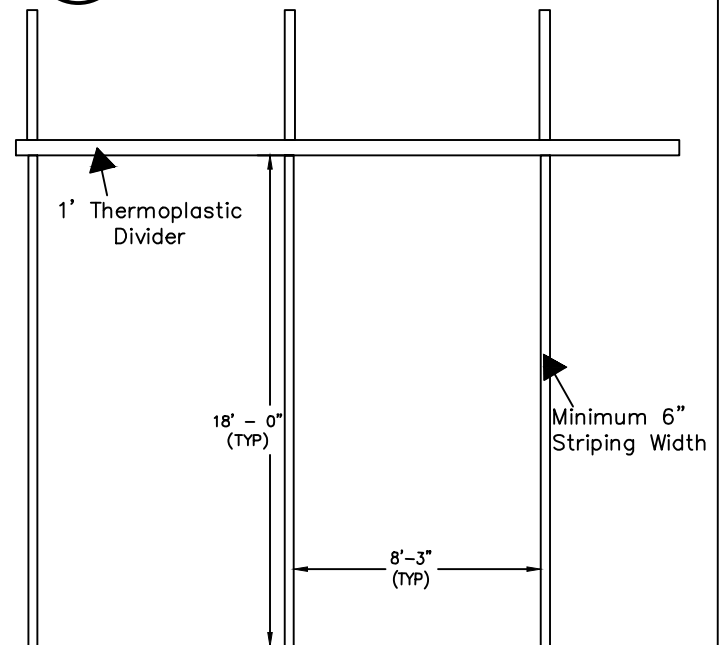
1. REFER TO INSTALLATION PLANS FOR LOCATIONS OF PARKING STALLS.



1 ANGLE PARKING STALLS WITH/WITHOUT SIGN INSTALLATION
C105 SCALE: NTS



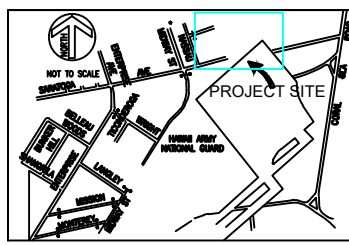
2 PRECAST CONCRETE WHEEL STOP
C105 SCALE: NTS



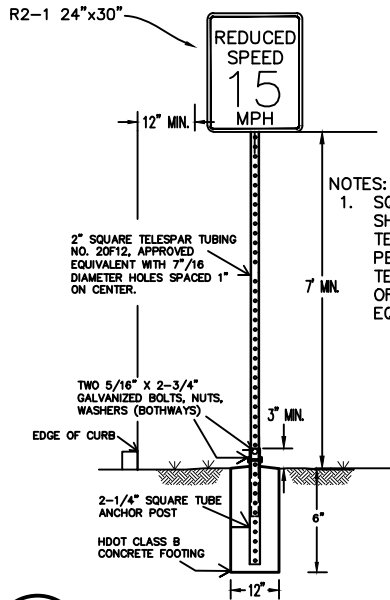
3 TYPICAL REGULAR PARKING STALLS WITHOUT SIGNAGE
C105 SCALE: NTS

Site Name:	B282 Parking Lot
TMK:	9-1-013-045-0000
REVISIONS	

DRAWN ON	23-Jul-25
DRAWN BY	Rick
CHECKED BY	Cory & Jim



LOCATION:	Kalaeloa
PROJECT TITLE:	B282 Repaving Lot & Entrance
Installation Detail	Scale:
SHEET NO. C105	Not to Scale

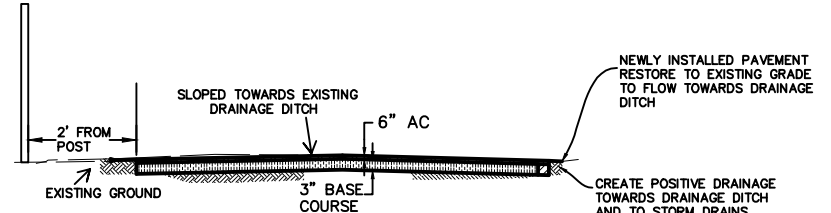


NOTES:
 1. SQUARE TUBE POST SHALL BE TELESCOPING PERFORATED TELESPAR TUBING OR APPROVED EQUIVALENT.

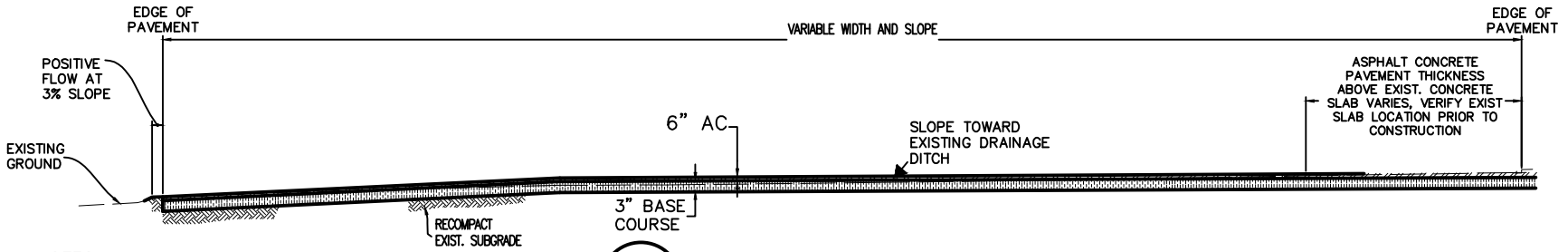
1 INSTALLATION OF NEW REDUCED SPEED POST WITH CONCRETE FOOTING
 C106 SCALE: NTS

GENERAL NOTES

1. SIGNS SHALL CONFORM TO THE LATEST EDITION OF FHWA PUBLICATIONS "MANUAL ON UNIFORM TRAFFIC CONTROL DEVICES FOR STREETS AND HIGHWAYS", "STANDARD ALPHABETS FOR HIGHWAY SIGNS", AND THE AMERICANS WITH DISABILITIES ACCESSIBILITY GUIDELINES (ADAAG) SECTION 4.30, AS AMENDED.
2. SIGNS SHALL BE MINIMUM T6061 SHEET COVERED WITH ENGINEERING GRADE REFLECTIVE SHEETING.
3. SIGNS SHALL BE 0.08 IN. THICKNESS.
4. ALL SIGNS SHALL HAVE PRE-DRILLED 3/8" DIA BOLT HOLES AT APPROXIMATE LOCATIONS
5. SIGNS LETTERING SHALL BE UPPERCASE LETTERS OF THE TYPE APPROVED BY THE FEDERAL HIGHWAY ADMINISTRATION.
6. BORDERS SHALL BE 3/8" THICKNESS.
7. MATERIAL AND LABOR IN FURNISHING AND INSTALLING THERMOPLASTIC MARKINGS SHALL BE ACCORDING TO STATE OF HAWAII DEPARTMENT OF TRANSPORTATION AND CITY AND COUNTY OF HONOLULU STANDARDS.



3 TYPICAL PARKING LOT SECTION
 C106 SCALE: NTS

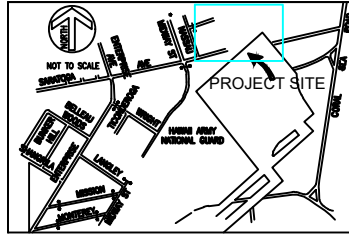


NOTES
 1. CONTRACTOR TO FIELD VERIFY EXISTING GRADE AND INSTALL NEW BASE COURSE AND ASPHALTIC CONCRETE TOWARDS EXISTING DRAINAGE DITCH.

2 FIELD VERIFICATION OF PARKING LOT SECTION
 C106 SCALE: NTS

Site Name:	B282 Parking Lot
TMK:	9-1-013-045-0000
REVISIONS	

DRAWN ON	23-Jul-25
DRAWN BY	Rick
CHECKED BY	Cory & Jim



LOCATION:	Kalaeloa
PROJECT TITLE:	B282 Repaving Lot & Entrance
Installation Detail	Scale:
SHEET NO. C106	Not to Scale